

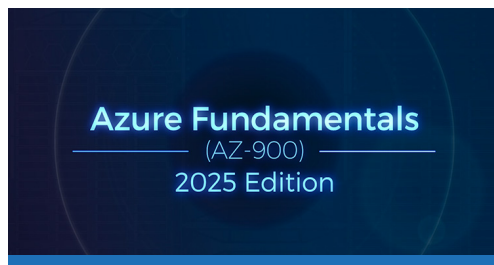


LearnKey's Microsoft Certified Fundamentals Courseware

With over 37 years of experience, LearnKey offers engaging, interactive, and flexible training mapped to industry certifications available online through GMetrix.

- Full-motion digital video available anytime, anywhere with an Internet connection
- The GMetrix platform provides the ultimate certification training solution with a single sign-on between training and test prep
- Project-based learning lessons and workbooks with hands-on activities help reinforce what the students are learning
- Teacher workbooks with answer keys and lesson plans

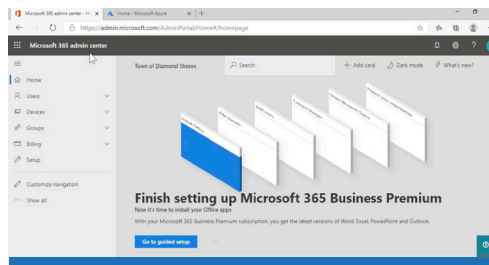
COURSE OFFERINGS



Microsoft Azure Fundamentals (AZ-900) - 2025 Edition

LearnKey's Azure Fundamentals (AZ-900) certification provides a fundamental introduction to cloud services with an emphasis on Microsoft Azure. The course serves as an excellent steppingstone to learning Azure further as it will prepare students for the AZ-900 exam, a Microsoft exam on Azure Fundamentals. Specific topics covered in this course include cloud concepts, architecture and services, and management and compliance. This should be the first course for anyone aspiring to improve their employability prospects for any Azure Administrator, Developer, or Data Analyst career path.

CLASS HOURS: 12.5 HRS.



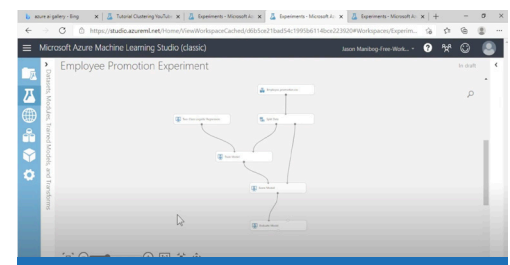
Microsoft 365 Fundamentals (MS-900)

LearnKey's Microsoft 365 Fundamentals (MS-900) course covers concepts of the Software as a Service (SaaS) portion of the cloud through introducing one to manage implementations through Microsoft 365. This course is excellent for those wanting to obtain the Microsoft 365 Fundamentals certification and become more employable in the area of SaaS administration. Specific topics in this course include: cloud concepts; core Microsoft 365 services and concepts; security, compliance, privacy and trust in Microsoft 365; and Microsoft 365 pricing and support.

This course offers both a web version and in-app option for all labs and assessments to accommodate students accessing the courseware remotely on Chromebooks.

CLASS HOURS: 16.5 HRS.

NEW COURSE COMING FALL 2025



Microsoft Azure AI Fundamentals (AI-900)

LearnKey's Azure AI Fundamentals (AI-900) course is an introduction to building artificial intelligence (AI) machine learning models through Azure. The course also covers basic AI concepts, giving those who take this course an increase in skills needed to land an introductory AI-based job. Specific exam topics include AI workloads and considerations, fundamental principles of machine learning, computer vision workloads, Natural Language Processing (NLP) workloads, and conversational AI workloads.

CLASS HOURS: 25 HRS.

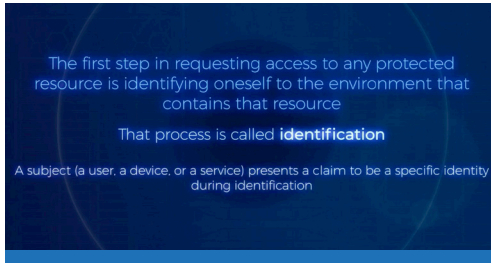
NEW COURSE COMING FALL 2025



Each Course Includes:

Video-based instruction, exercise labs, pre and posttests, flash cards in addition to a PDF project workbook. The workbook includes fill-in-the-blanks, glossary terms and definitions and many other resources to help reinforce learning.

COURSE OFFERINGS CONTINUED



Microsoft Security, Compliance, and Identify Fundamentals (SC-900)

LearnKey's Security, Compliance, and Identity Fundamentals (SC-900) course introduces identity management and how properly managing identities impacts security and compliance in cloud-based environments. The course focuses on Microsoft Azure cloud-based environments and integration with existing on-premises Windows and Linux environments. Specific topics include security, compliance and identity concepts, how to manage identities across cloud-based and on-premises environments, security and compliance solutions. This course will help students get ready to pass the SC-900 exam, and help with employability prospects for any job requiring general knowledge of Microsoft solutions to identity, security, and compliance challenges involving cloud-based environments.

CLASS HOURS: 16.5 HRS.

NEW COURSE COMING FALL 2025



Microsoft Power Platform Fundamentals (PL-900) 2025 Edition

The Power Platform Fundamentals course introduces students to Power Platform, a suite of apps that help to automate business processes and analyze data within an organization. The suite comprises Power Apps, Power Automate, Power BI, Copilot Studio, and Power Pages. The course covers all five of these apps at a high level, examines the use of AI in many of these apps, and gets one ready to obtain the Power Platform Fundamentals certification. And the course simulates a real-world environment in which Power Platform apps are used, thus readying one to be more employable for any job that requires Power Platform skills.

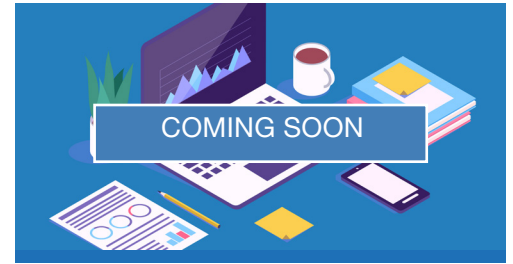
CLASS HOURS: 18 HRS.



Microsoft Azure Data Fundamentals (DP-900) 2025 Edition

LearnKey's Azure Data Fundamentals (DP-900) course provides a fundamental introduction to cloud-based data storage and analytics services with an emphasis on Microsoft Azure. The course is an excellent step in learning about today's data environments and analytics capabilities in Azure, as it will prepare students for the DP-900 exam. This course will cover core data concepts, relational and non-relational data storage techniques, and address today's data analytics requirements. This course is a great choice for anyone aspiring to improve their employability prospects for an Azure Database Administrator, Data Engineer, or Data Analyst career path.

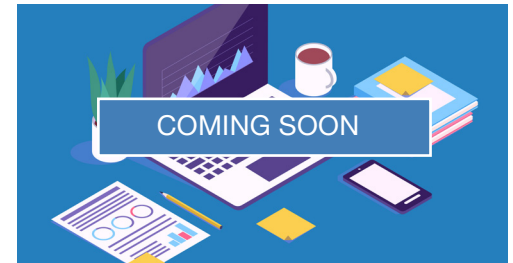
CLASS HOURS: 12.5 HRS.



Microsoft Dynamics 365 Fundamentals CRM (MB-910)

Coming Fall 2025.

CLASS HOURS: TBD



Microsoft Dynamics 365 Fundamentals ERP (MB-920)

Coming Fall 2025.

CLASS HOURS: TBD



Each Course Includes:

Video-based instruction, exercise labs, pre-assessments and post-assessments and, flash cards in addition to a PDF project workbook. The workbook includes fill-in-the-blanks, glossary terms and definitions, and many other resources to help reinforce learning.